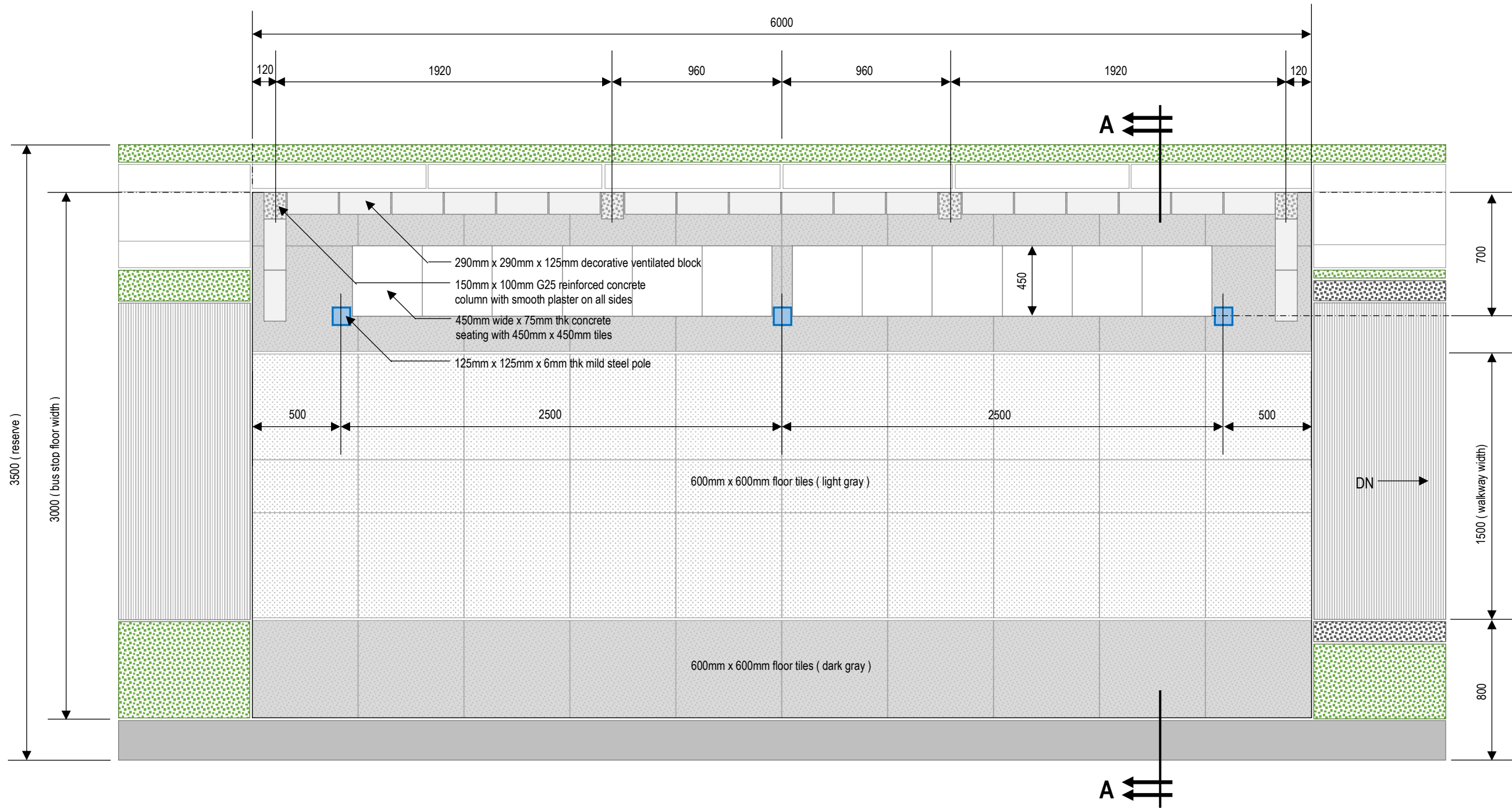
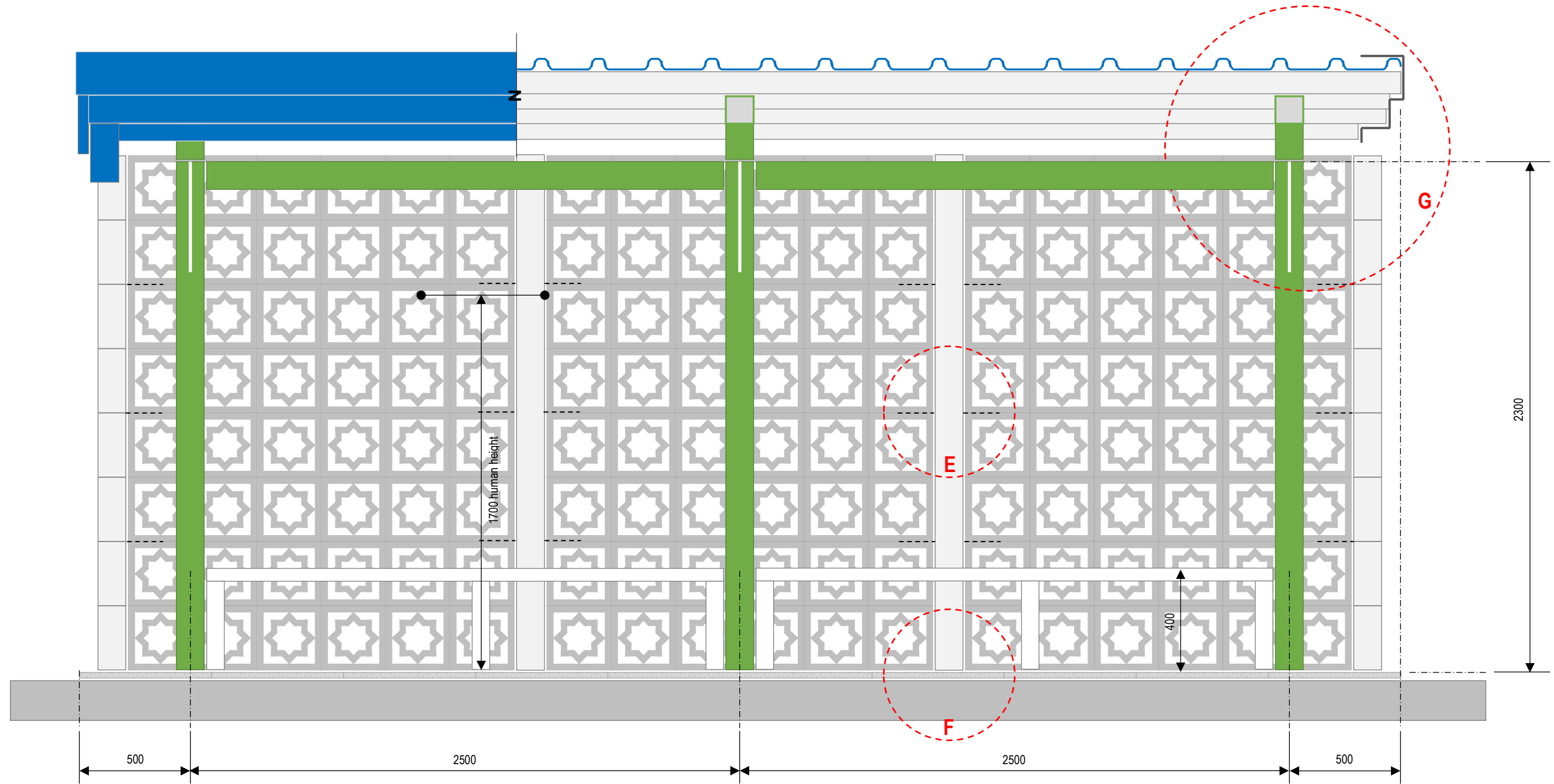


saiz darab 4



HENTIAN BAS
PELAN LANTAI

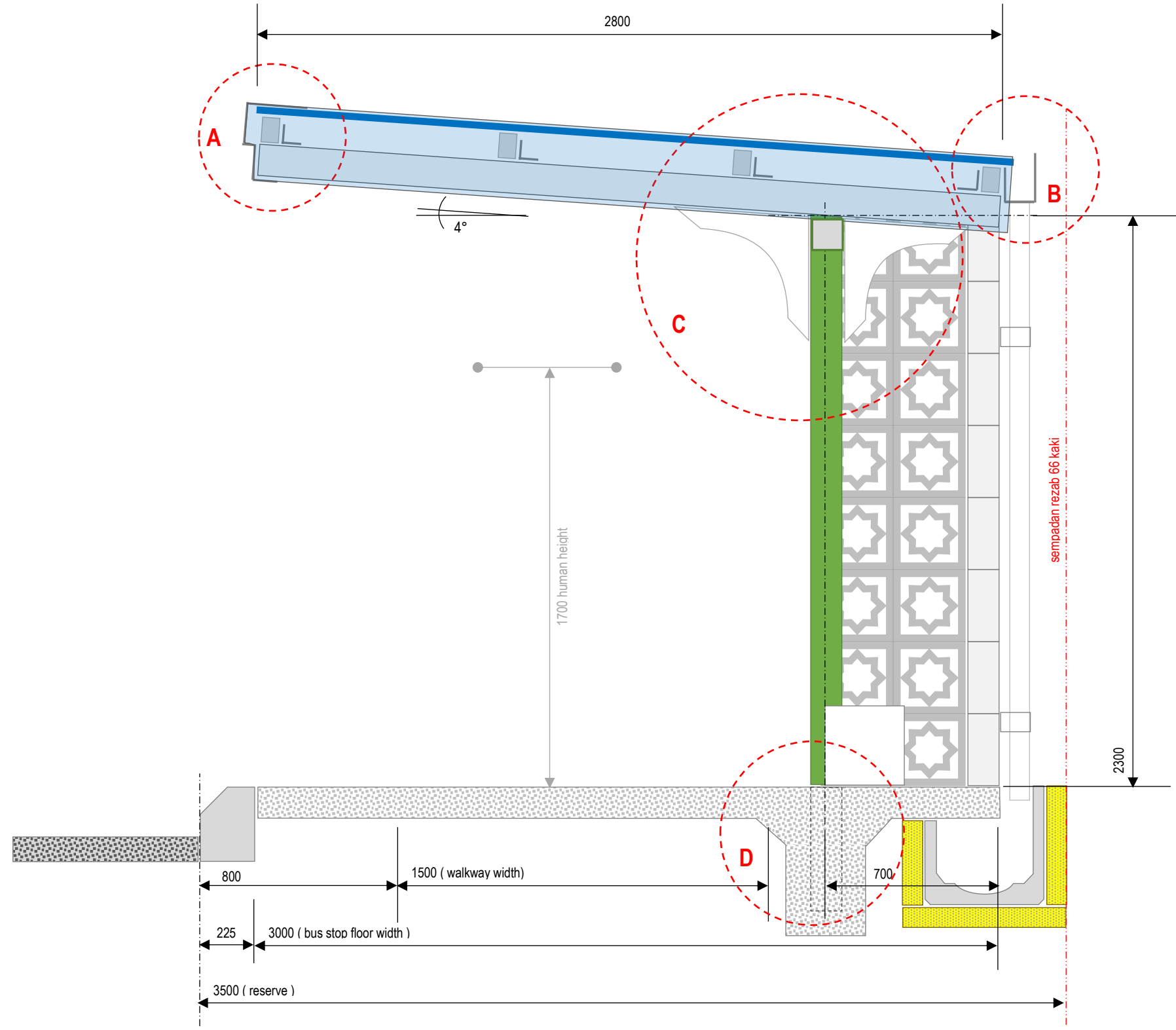
saiz bahagi 2



HENTIAN BAS
PANDANGAN HADAPAN

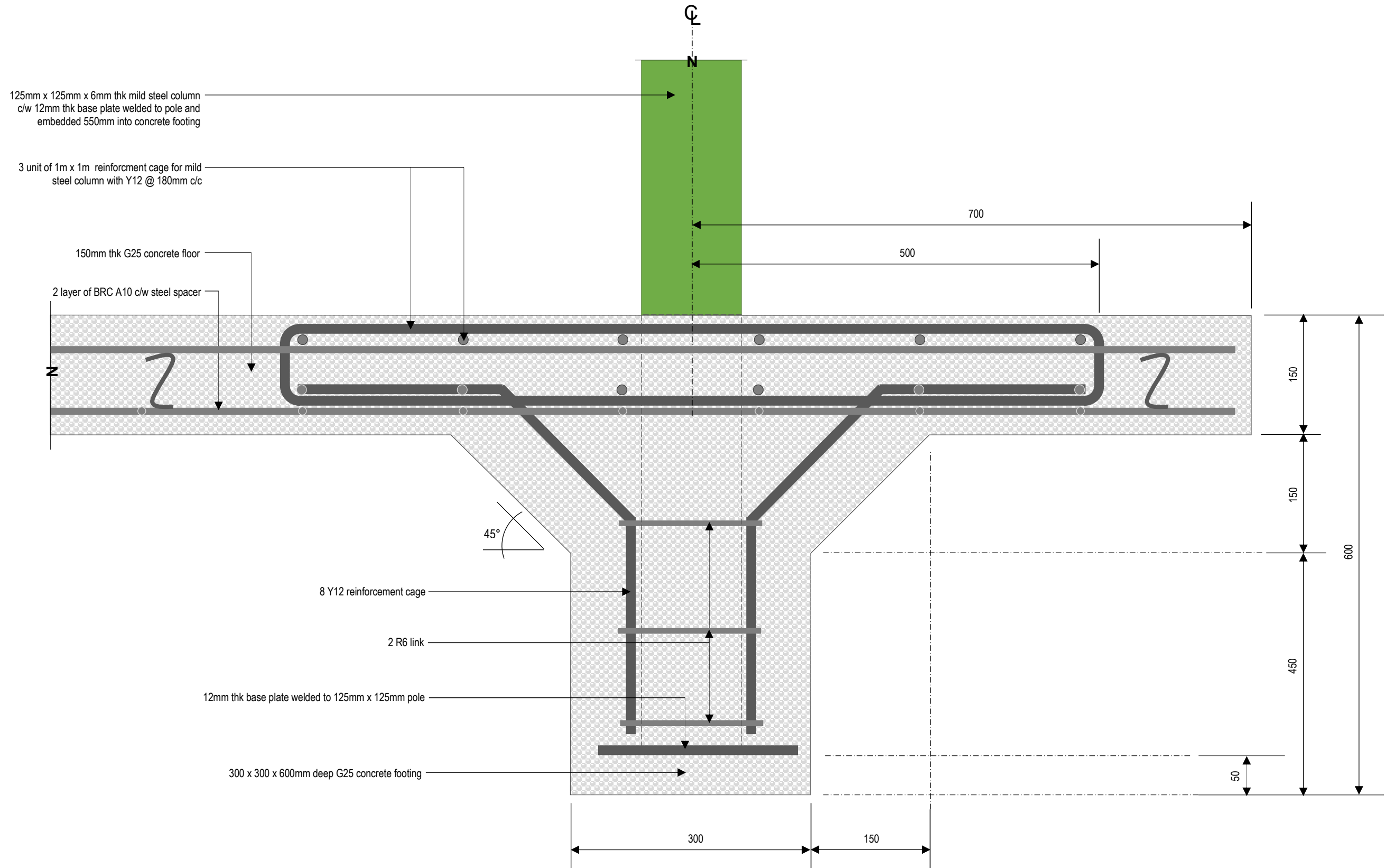
saiz tiang 125mm x 125mm / 2
0.125 / 2 = 0.0625 @ 0.063

tinggi tiang 2300mm / 2
= 1.15



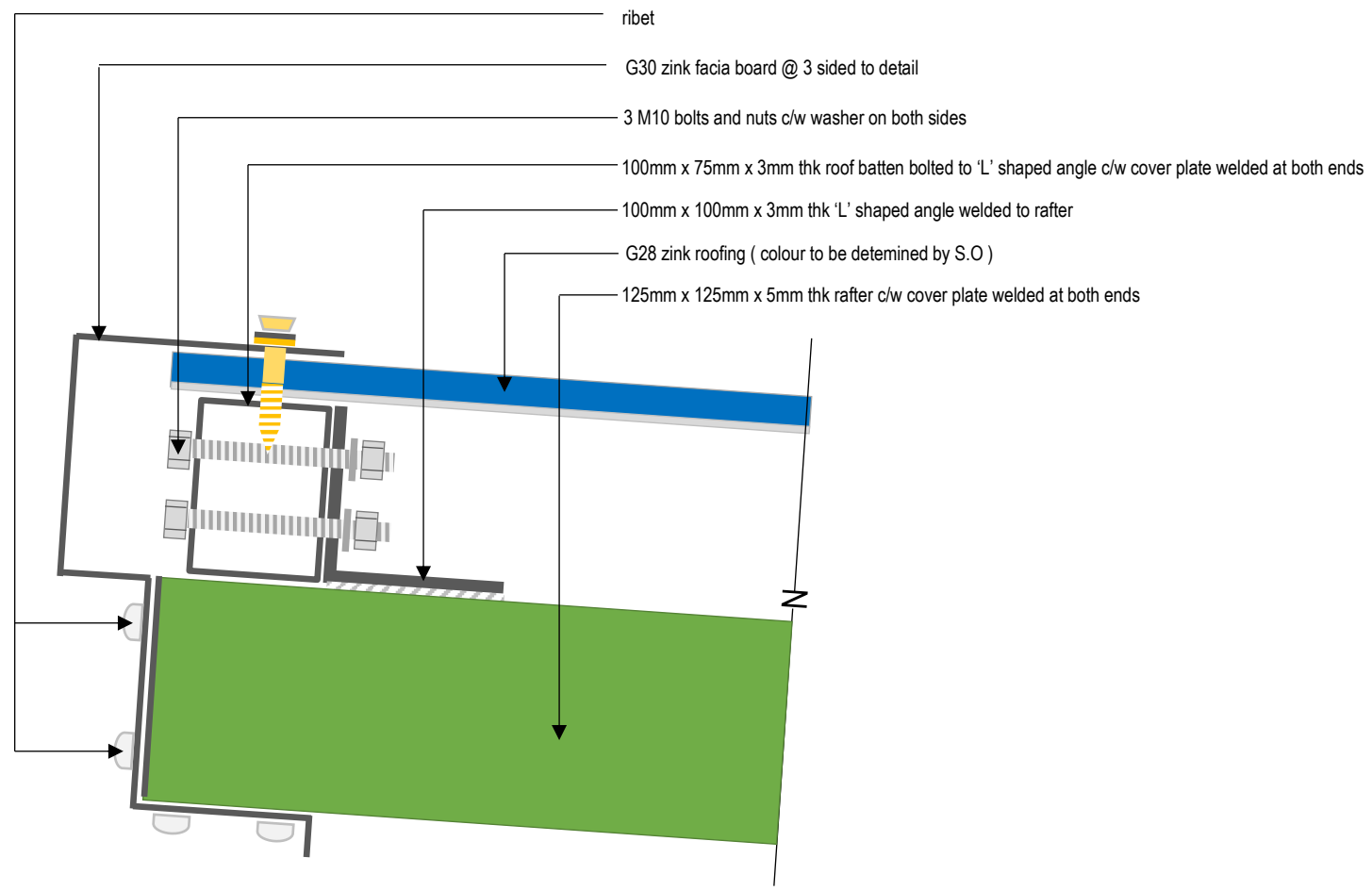
HENTIAN BAS
KERATAN A - A

saiz bahagi 5

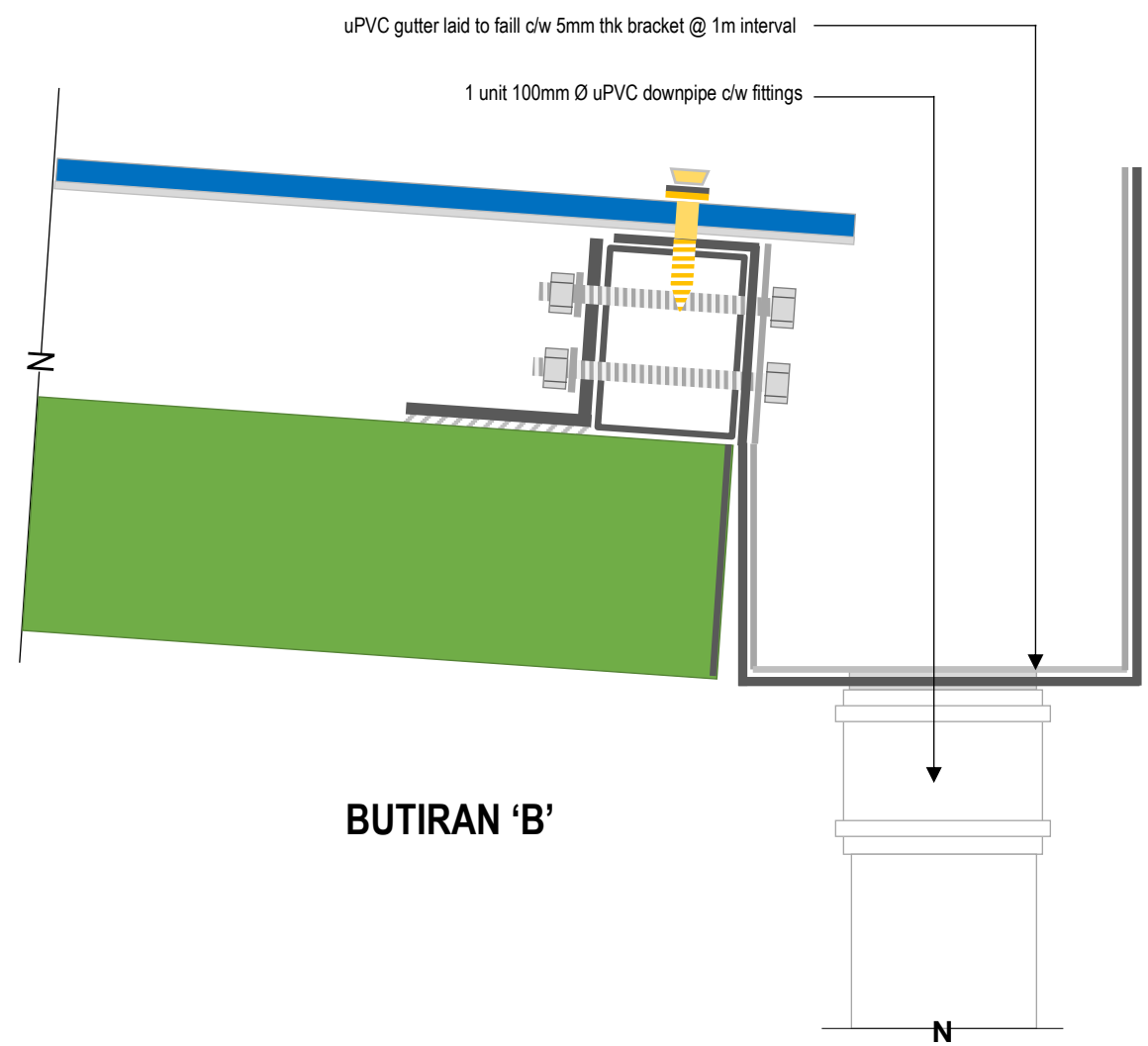


BUTIRAN 'D'

saiz bahagi 4



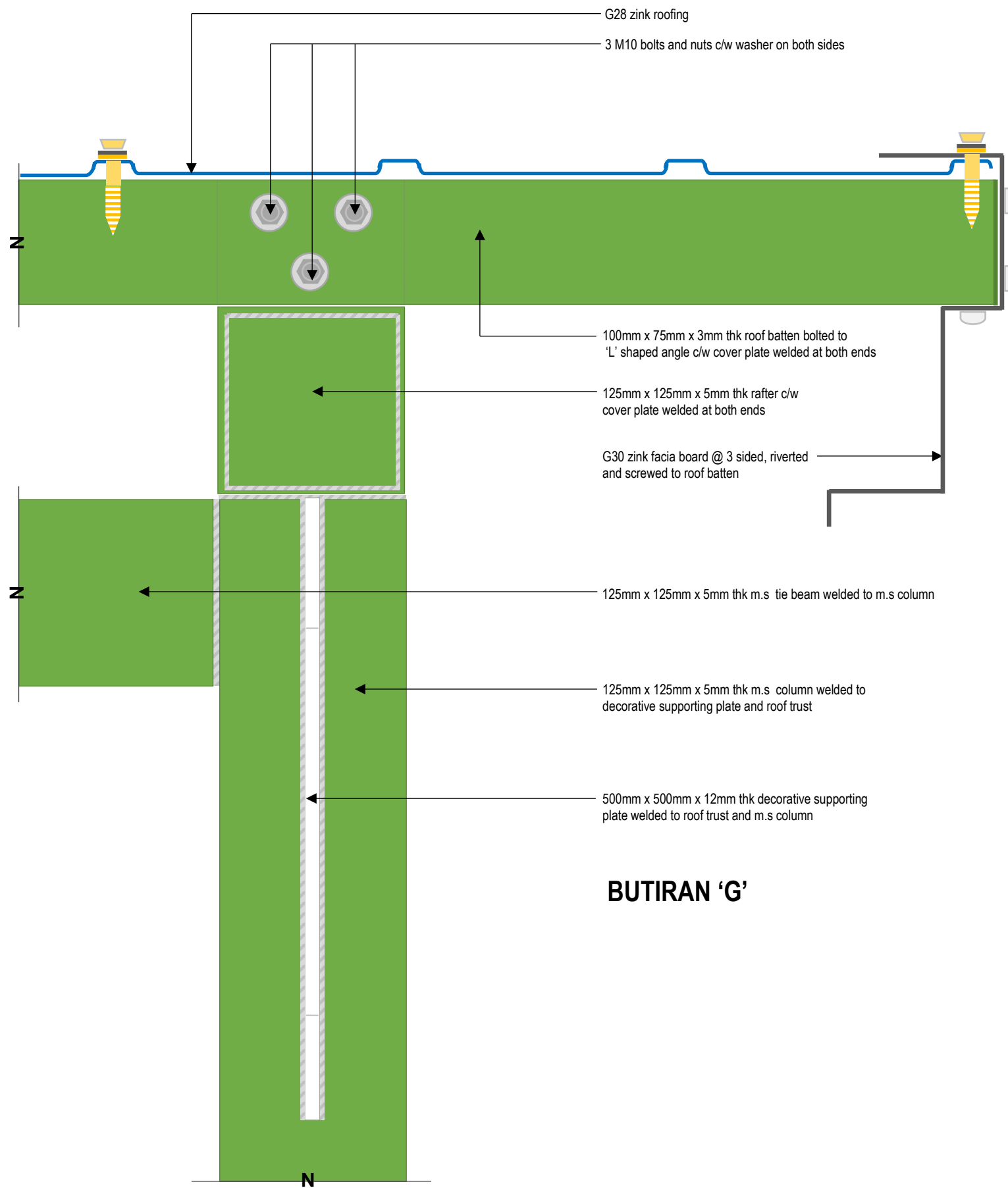
BUTIRAN 'A'



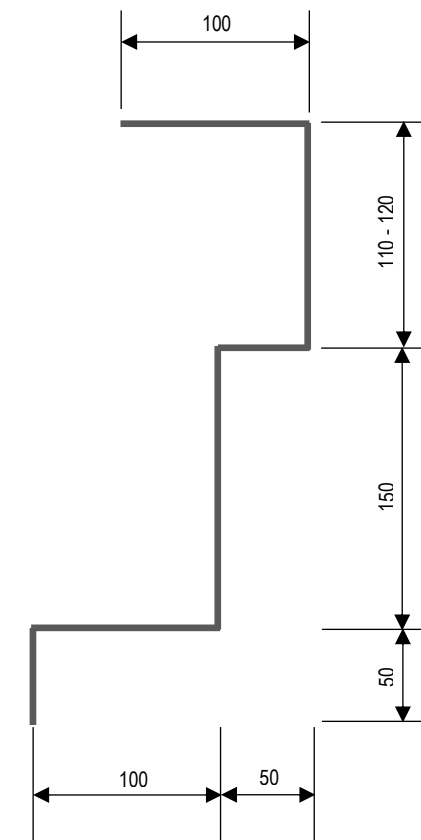
BUTIRAN 'B'

N

saiz bahagi 4

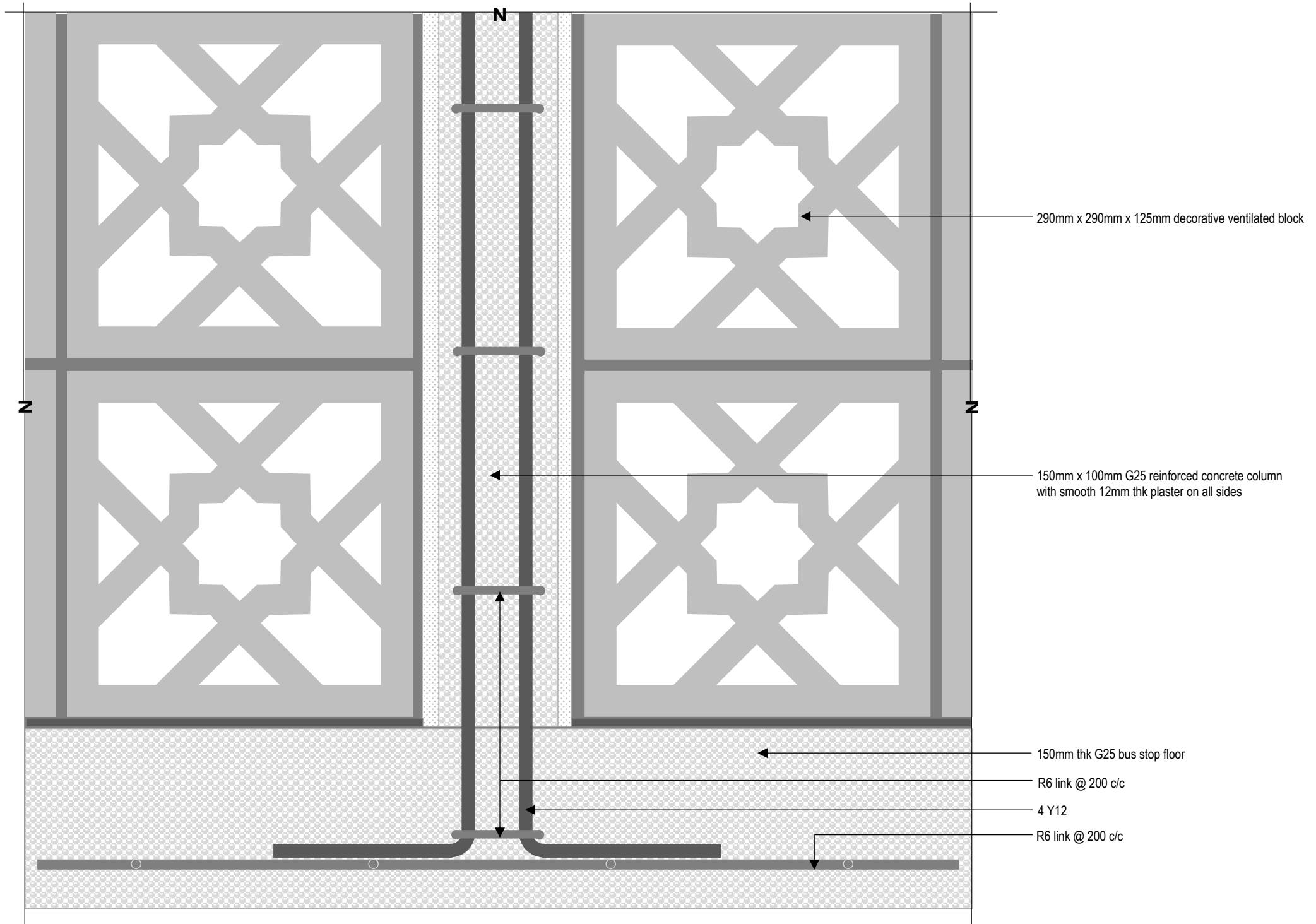


BUTIRAN 'G'



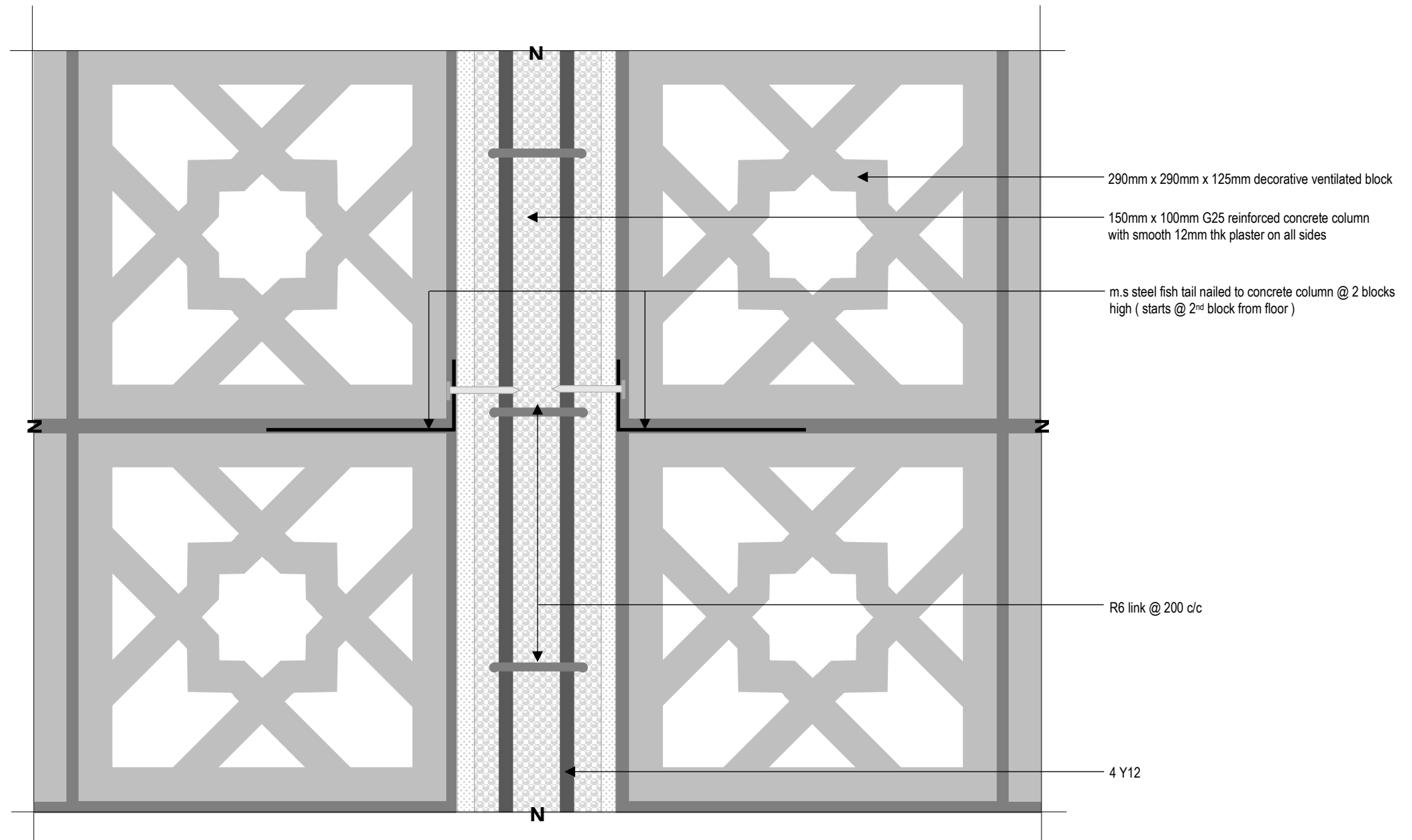
**G30 ZINK
FACIA BOARD
DETAIL**

saiz bahagi 4



BUTIRAN 'F'

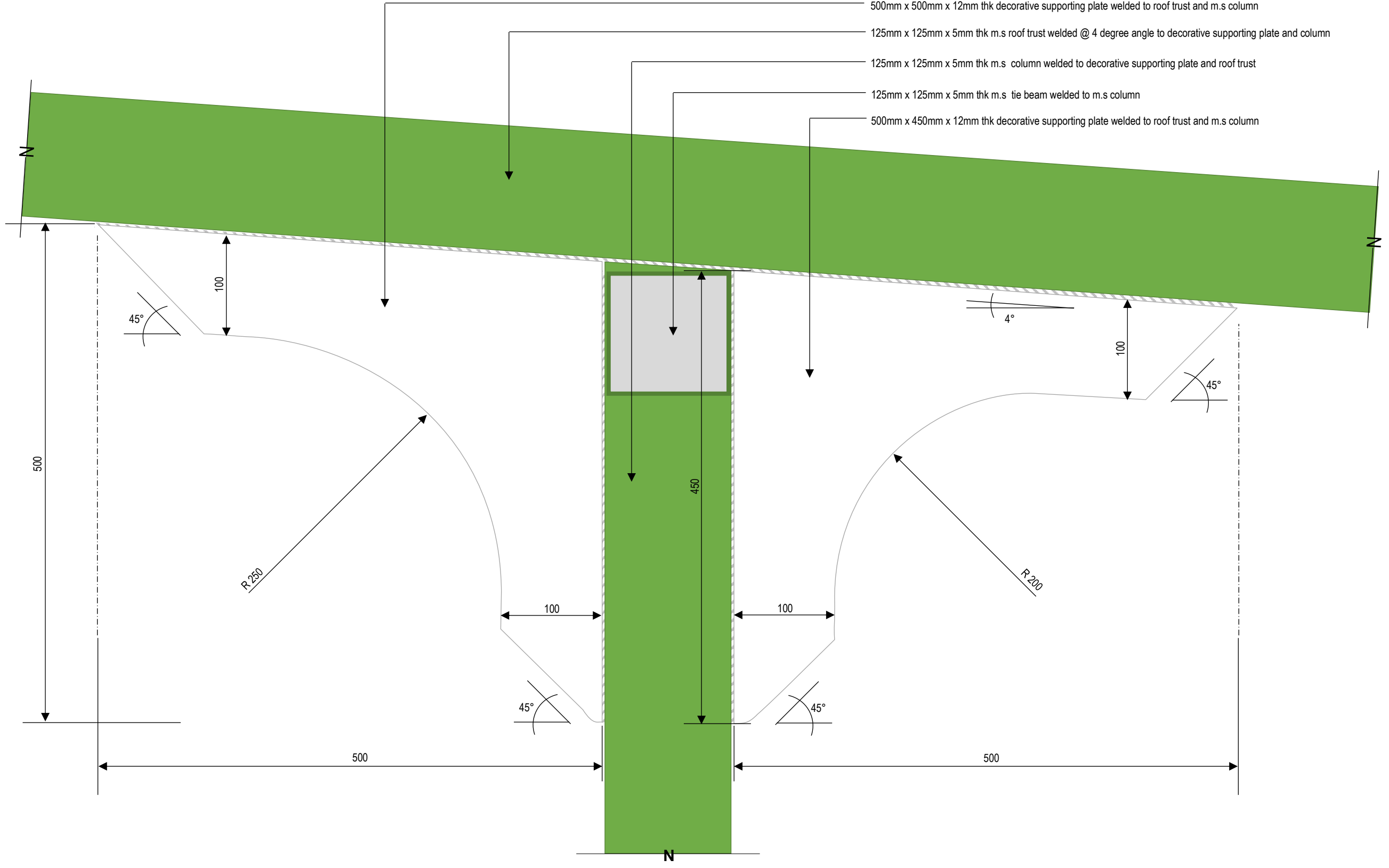
saiz bahagi 4



BUTIRAN 'E'

saiz darab 2.5x

- 500mm x 500mm x 12mm thk decorative supporting plate welded to roof truss and m.s column
- 125mm x 125mm x 5mm thk m.s roof truss welded @ 4 degree angle to decorative supporting plate and column
- 125mm x 125mm x 5mm thk m.s column welded to decorative supporting plate and roof truss
- 125mm x 125mm x 5mm thk m.s tie beam welded to m.s column
- 500mm x 450mm x 12mm thk decorative supporting plate welded to roof truss and m.s column



BUTIRAN 'C'